



# TOILET SERVICE TRUCK

TST-JT 3000/ TST-JT 5000

Aeroplane's waste container is emptied by vacuum

Three tanks:

- Waste tank 1800-3000 liters
- Water tank 800-1200 liters
- Chemical liquid tank 300-500 liters

Information display in cockpit

- Tank compartment level display
- Reversing sensors
- Reversing camera
- Interlock
- Control switches

Information display in lift platform

Tank compartment level display



### TANK

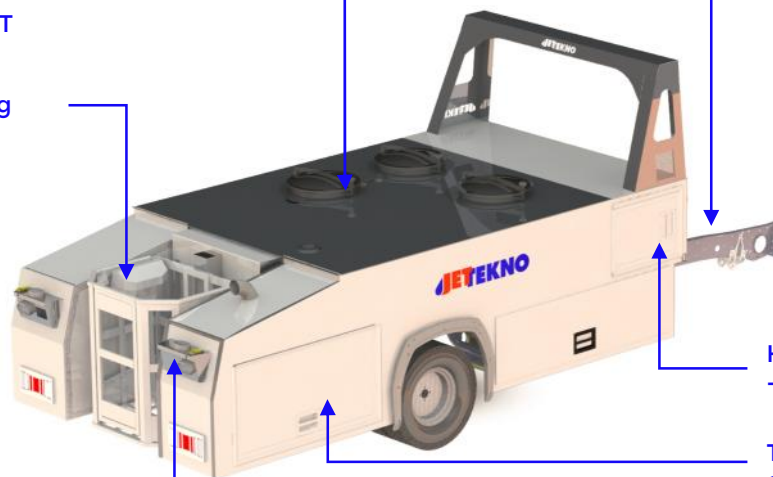
- Capacity 3000-5000L
- 3 sections in TST
- 2 sections in WST

### LIFT

- 4,5 meters working height

### Safety

- Rear view camera
- Parking sensors
- Limit switch for lift
- Interlock system



### Chassis

- Customers Choice

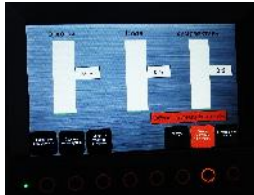
- Hydraulic generator
- Front right cabinet

- Technical compartment
- Rear Cabinets



### HYDRAULIC GENERATOR

- Power to the pumps and heating
- Automatically starts from PTO



### PLC SYSTEM

- Level measurement
- Interlock system
- Pump control
- Heating control etc.



### LIFT

- Working height 4, 5meters
- Level switches for safety



### LIFT CONTROL PANEL

- LCD display
- Switches for pumps
- Lift control



### PUMP COMPARTMENT

- Pump capacity 120 l/min
- Stainless steel piping and pump



### VACUUM COMPARTMENT

- Vacuum 300 mbar
- Steam generator



### WATER AND STEAM HOSE ON HOSE REELS

- Hose always in heated compartment
- Hose protected from dirt and sunlight



### WASTE HOSE

- Connected to heated coupling

## Jet-Tekno Oy

Nuutisarankatu 12  
FIN-33900 Tampere  
FINLAND



Tel. +358 3 233 8800  
Fax. +358 3 233 8877



jet-tekno@jet-tekno.fi  
www.jet-tekno.fi